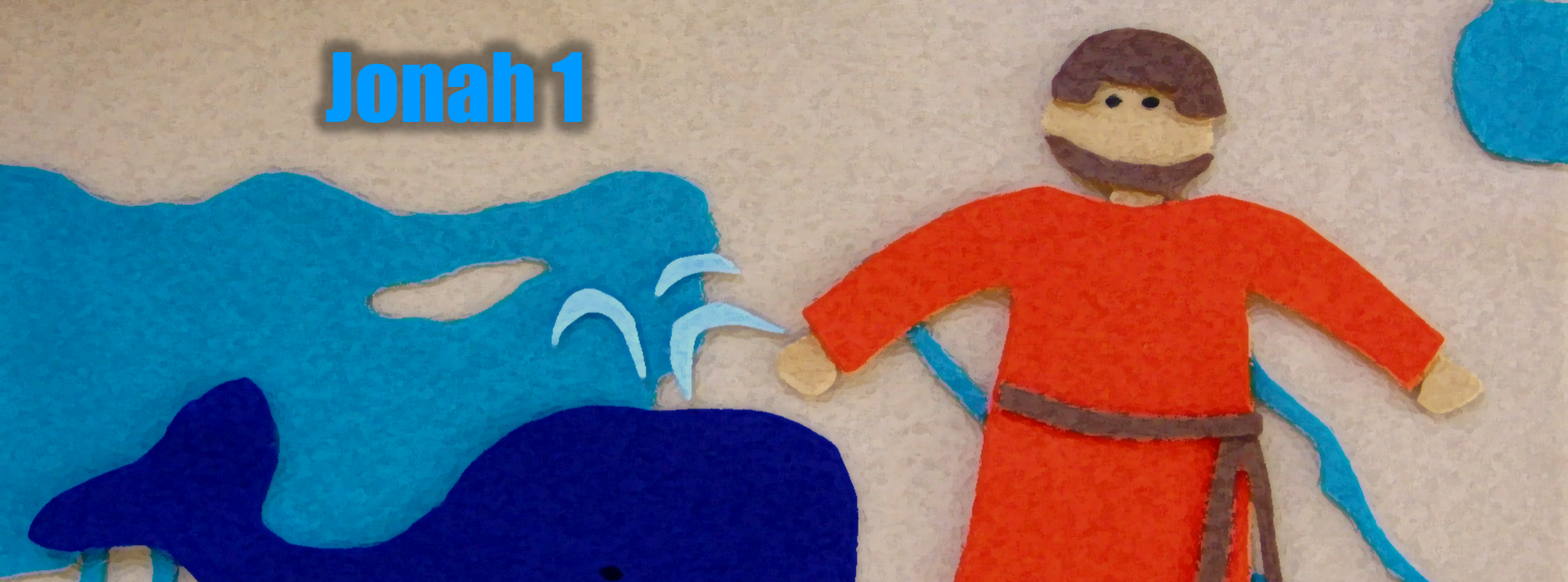


Jonah 1



The Missing Servant of God



The Way We Typically Live

We typically live by
formulas.



The Way We Typically Live

What is there to make us
think Jonah's formulas
are working?



The Way We Typically Live

The typical emotional outcome
when our formulas don't work is
smoldering obedience.



1.

We make ourselves
unavailable.

**What's the evidence
of smoldering
obedience?**

“But Jonah ran away from the LORD and headed for Tarshish. He went down to Joppa, where he found a ship bound for that port. After paying the fare, he went aboard and sailed for Tarshish to flee from the LORD.”

Jonah 1:3

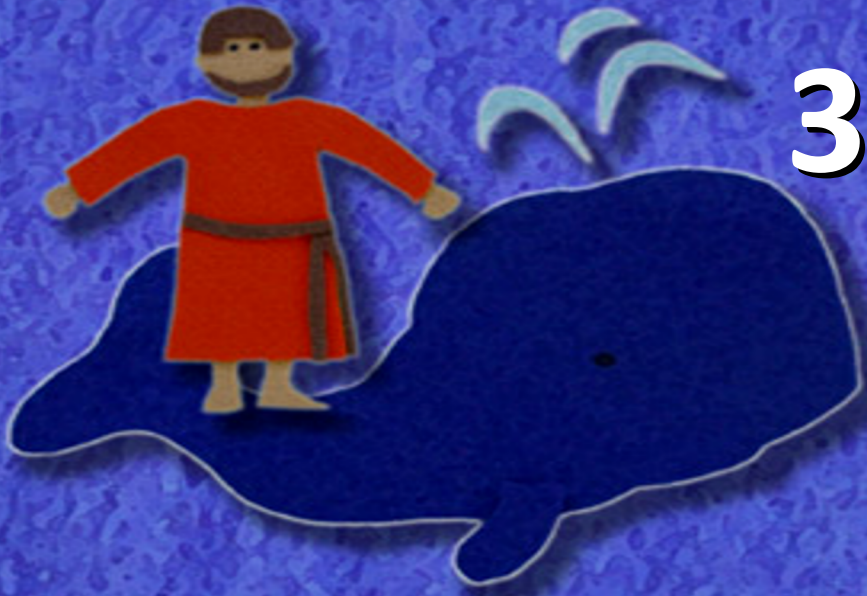


2. We stop listening to God.

“But Jonah ran away from the LORD and headed for Tarshish. He went down to Joppa, where he found a ship bound for that port. After paying the fare, he went aboard and sailed for Tarshish to flee from the LORD.”

What's the evidence of smoldering obedience?

Jonah 1:3



3.

We neglect prayer.

“The captain went to him and said, ‘How can you sleep? Get up and call on your god! Maybe he will take notice of us so that we will not perish.’”

Jonah 1:6

What's the evidence
of smoldering
obedience?



4.

We stop caring
for others.

“This terrified them, and they asked, ‘What have you done’ They knew he was running away from the LORD, because he had already told them so.

What’s the evidence
of smoldering
obedience?

Jonah 1:10



5.

We experience
spiritual depression .

“Then they took Jonah and
threw him overboard, and
the raging sea grew calm.”

What's the evidence
of smoldering
obedience?

Jonah 1:15



**So what can
we do?**